

650w atx12/eps12v silent 12cm Logisys Power Supply



Model

Brand LOGISYS Computer
Model PS650U12

Spec

Type ATX12V / EPS12V
Maximum Power 650W
Fans 1
Main Connector 20+4Pin
+12V Rails 2
PCI-Express Connector 2 x 6-Pin
SATA Power Connector 4
SLI Ready
CrossFire Ready
Modular No
Over Voltage Protection Yes
Input Voltage 100 - 120 V/ 200 - 240 V
Input Frequency Range 50/60 Hz
Input Current 10 / 5A
Output +3.3V@30A,+5V@55A,+12V1@22A,+12V2@22A,-12V@0.5A,+5VSB@2.5A
Approvals cUL, CE, CB, TUV, FCC, CSA

Features

Connectors 1 x 24-Pin Mainboard (Approx. 500mm / 20")
1 x 8-Pin P8 (Approx. 500mm / 20")
1 x 4-Pin P4 (Approx. 500mm / 20")
2 x 6-Pin PCI Express (Approx. 500mm / 20")
4 x SATA (Approx. 500mm / 20")
6 x 4-Pin Molex (Approx. 500mm / 20")
1 x 6-Pin AUX (Approx. 500mm / 20")
2 x 4-Pin FDD (Approx. 500mm / 20")

154.000 Total

Iceberg 5 fan cooler



Features:

- All-in-One VGA Cooling Kit
- Compatible with current nVIDIA and ATI VGA cards
- Bright Blue LED Fan
- High CFM / Low Noise Level
- 8 Memory Heatsinks Included

Compatibility:

- nVIDIA:
 - GeForce3 Ti 200/500
 - GeForce4 MX 420/440/460
 - GeForce4 MX 440 SE/440 8X
 - GeForce4 Ti 4200/4200 8X



Type: MicroATX Desktop

Case Material: Aluminum 1.0 Chassis with ABS plastic front panel

Power Supply: Not Included

Motherboard Compatibility: Micro ATX, Baby AT

With Side Panel Window: Optional (See Model Description)

External 5.25" Drive Bays: 2

External 3.5" Drive Bay.: Slot replaced by 2.5" Removable IDE HDD Enclosure. (SATA HDD PCB Card Sold Separately.)

Internal 3.5" Drive Bays: 2

Expansion Slots: 4

Input Current: 0.3A (max)

Cooling: 80mm Fans Not Included

120mm Fans 1 x 120mm Rear Fan (See Model Description)

Side window Optional: 2 clear Acrylics side window Top Cover or Solid no window Top Cover. (See Model Description)

Dimensions: 9" x 11.2" x 14.7" (H x W x D)

200.000 Mas Envio y Consignacion Nacional



Torre Zodiac



en accion



*incluye , un fan con led de tres colores rojo, verde y azul de 120mm, y lector termico en el frente, no incluye fuente de poder

* Chassis Material: SECC Steel

* Motherboard Support: Standard ATX, Micro ATX

* Drive Bays:

o External: 4 x 5.25" & 2 x 3.5"

o Internal: 5 x 3.5"

* 7 x Expansion Slots

* Front Panel Switch: Power / Reset

* Front Access Ports: 2 x USB 2.0 & Audio , Mic & 1394

* Cooling Fan Space:

o Rear: 1 x 120mm COLOR LED FAN

- o Front: 1 x 80mm or 1 x 120mm (optional)
- * Air Duct: 1 (Installed on Side)
- * Temperature Display: 1 (Installed on Front Door)
- * Transparent Side Window: Acrylic
- * Power Supply: PS2/ATX
- * Dimensions: 200 x 430 x 440 mm (7.9" x 16.95" x 17.35")[/COLOR]

[/B]

215.000 Total

AMD Phenom II X4 920 2.8GHz 4 x 512KB L2 Cache 6MB L3 Cache Socket AM2+ 12: Processor



392.000 total (380.000 en bogota o armenial)

Antec earthwatts EA380 380W



- Connectors 1 x Main connector (20+4Pin)
- 1 x 12V(P4)
- 6 x peripheral
- 2 x SATA
- 1 x Floppy
- 1 x PCI-E
- Features 80mm low noise cooling fan
- Dual 12V outputs: 12V2 for Motherboard and peripherals; 12V1 for processor
- Industrial-grade protection circuitry prevents damage resulting from short circuits, power overloads, over voltage, and under voltage
- 80 Plus Certified is the newest standard in power supply efficiency.
- At least 80% high efficiency at any load, will save you money on your electrical bill.
- Reduce heat in your computer's system.
- 4 SATA connectors
- PCI-E connector
- Universal input
- PF value up to 99%[/COLOR][[/B]

94.000 Total

Acer AL2216WBD 22-Inch Widescreen LCD Monitor

imagenes y especificaciones



especificaciones

<http://www.newegg.com/Product/Product.aspx?Item=N94&Tpk=AL2216W>

400.000 Mas Envio y Consignacion Nacional

22 Lcd Emprex



Model No.	LM-2202
LCD Display	22" Wide Aspect TFT active matrix panel
Display Size	473.76(H) x 296.16(V) mm
Pixel Pitch	0.282(H) x 0.282(V) mm
Resolution Maximum	WSXGA+(1680x1050)@60Hz
Max. Display Color	16.7M colors
Brightness	300 cd/m2 (typ.)
Contrast Ratio	1000:1 (typ.)
Viewing Angle	Horizontal:160o (typ.)
(CRIÜ10)	Vertical:160o (typ.)
Response Time (Tr+Tf)	5ms (typ.)
Signal Input	D-sub , DVI-D (w/HDCP)(Optional)
Input Frequency Range	Horizontal: 30KHz to 82KHz
Vertical: 56Hz to 76Hz	
LED Indicator	Active: Green / Power saving: Orange
Plug & Play	VESA DDC/CI compliance
Speakers	1W x 2
OSD Controls	5 buttons (Power, Volume/+, Menu/OK, Theme Mode/-, Auto /Exit)
OSD Functions	Auto, Theme Mode, Volume, Brightness, Contrast, Input Signal Selection, Color Temperature, OSD Menu Language, Display Ratio, Power Saving Mode, White Balance, Clock, Phase, H. Position, V. Position, DDC/CI, Auto Demo, Information, Recall.
OSD Language	16 Languages (incl. English, German, French, Italian, Spanish, Japanese, Chinese, Korean, Russian, Magyar, Dutch, Polish, Portuguese, Swedish, Finnish, Danish)

	Russian, Norway, Dutch, Polish, Portugal, Swedish, Finnish, Danish)
Power input	AC 100~240V , 47Hz~63Hz
Power Consumption	Active: <55W / Standby: <2W / OFF:<1W
Operating Conditions	Temperature: 0oC to 40oC
Humidity: 20%-80% (No Condensation)	
Storage Conditions	Temperature: -20oC to 60oC
Humidity: 10%-90% (No Condensation)	
Altitude:40,000 fts	
Unit Dimensions	510(W) x 424(H) x 202(D) mm
Package Dimensions	569(W) x481(H) x 130(D) mm
Net Weight	4.9 Kg
Gross Weight	6.7 Kg
Container Load	40' : 1536 sets
20' : 768 sets	
Certification	cUL, FCC-B, CE, NEMKO/GS, TCO'03, CCC, Energy Star
Others	Theme Mode Selection, HDCP Compatible, Monitor Life-Extension Function, Display Ratio Selection, Embedded Power Supply

Responder:

7 meses de uso, ningun pixel muerto

300.000 Mas Envio y Consignacion Nacional

TRENDnet TK-207K 2-Port USB KVM Switch



Model	TK-207K
Spec	
Type	D-Sub, USB
PC Connectors	1 x USB (Type A) 1 x VGA/SVGA HDB 15-Pin (male)
Console Connectors	2 x USB Keyboard/Mouse: (Type A) 1 x VGA/SVGA 15-pin HDB
Computer Connections	2 Ports
Monitor Connections	1 Port
Video Resolution	2048 x 1536
PC Selection	Push Button, Hot-Key Commands or Windows-Based Client Switching Software
AutoScan Interval	10 seconds
Monitors Supported	VGA or SVGA compatible monitor
Temperature	0°C to 40°C(32°F to 104°F)
Humidity	0% to 90%,Non-Condensing
Dimensions	3.9" x 2.8" x 1.1"
Weight	0.22 lbs.
Features	
Power Features	USB Interface Power
USB Features	USB port only
Features	Use one keyboard, monitor, and mouse to control two computers USB Keyboard/Mouse emulation with 2-set of detachable KVM Cables Supports Microsoft Intellimouse, Optical Mouse, Logitech Net Mouse and more Supports Windows 98/98SE/ME/2000/XP/2003 Server, Linux, and Mac OS Multi-Platform support for PCs, Macintosh G3/G4, iMac and Mac Mini Hot-Plug pluggable. Adds PC or removes the connected PCs for maintenance without powering down the KVM Switch or other PC's Switches PC by hot-keys, push button or windows-base client switch software. Auto-Scan & LED display for easy status monitoring User definable hot-key (Windows Only) USB Interface Power method
Packaging	
Package Contents	TK-207K 2-Port USB KVM Switch User's guide Utility CD-ROM 2 sets of USB KVM cables

70.000 Total

Thermaltake CL-P0310 BigType 120VX Universal CPU Cooler with VR Fan C



Features

Best performance, supports up to TDP 130W.
6 heatpipes, maximized heat transfer.
High density of aluminum fins, provides large surface for heat dissipation.
Seamless soldering process and large copper base provide good contact for heat conductivity
Waved fins to reduce wind shear noise.
3 in 1 application
For LGA775: push pin design for faster install.
For K8 and latest socket AM2, tool-less clip, easy to install.
VR Fan
Silent and powerful VR fan, 16dBA at minimum fan speed.
Adjustable fan control to boost cooling performance.

Tech Specs

Fan Type: CPU Fan
Socket Type: AM2
754
775
939
Fan Speed: 1300 RPM
Noise Level: 16 dBA
Air Flow: 86.5 CFM
Static Pressure: 2.22 mm/H2O
Heatsink Material: Copper Core
Aluminum Fins
Voltage: 12 V
Power Consumption: 3.0 W
Connector(s): 3-Pin Motherboard
Fan Dimensions: 120 x 120 x 25 mm
Heatsink Dimensions: 122 x 122 x 103 mm
Life Hours: 30,000 Hours

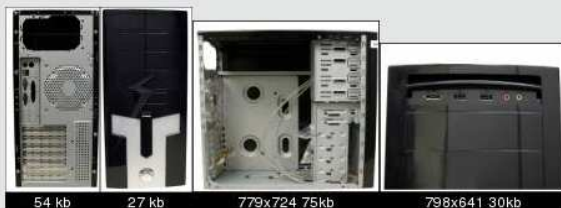
130.000 Total

Airtouch Flexible Illuminated Full Size Keyboard



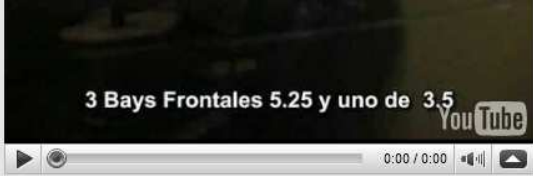
78.000 Total

Modtek Cassini Gaming Case



cassini en accion





Features:

- * Huge Side Window
- * Embedded Lightening Bolt Design on Front
- * Front Ports:
 - o 1 x SATA Port
 - o 2 x USB Ports
 - o 2 x Audio Ports

Specifications:

- * Fan Space:
 - o Rear: 1 x 80mm Fan Slot
 - o Side: 1 x 80mm Fan Slot
- * Dimensions: 466 x 252 x 526 mm

185.000 Total

PlayStation 3 Zero Wireless Controller



Features

- Wireless - Low Latency, high-end wireless chipset provides a fast, responsive and secure connection
- Backlit Buttons - The back-lit LED action buttons allow for easy navigation in low light situations
- Hybrid Design - Unique metal-resin design provides a strong grip, and comfort for long gameplay sessions
- NiMH Battery - Rechargeable NiMH battery pack provides up to 25 hour of playtime
- Six-Direction & Rumble - With full six-direction tilt functionality and vibration support, the Zero is fully compatible with all PS3 software and control schemes.
- Unique metal polymer resin hybrid design for optimal grip and comfort
- Rechargeable NiMH battery with USB charging cable provides up to 25 hours of play time
- Precision analog sticks, buttons and triggers provide maximum durability
- Heat dissipating aluminum panels
- LED charge indicator light
- AA battery pack
- 3 unique designs (Shipped Randomly)
- Unique metal polymer resin hybrid design for optimal grip and comfort
- Full 6 direction motion control
- Rechargeable NiMH battery with USB charging cable provides up to 25 hours of play time Backlit LED analog face buttons
- State of the art wireless chip set with a range of up to 30 ft
- Precision analog sticks, buttons and triggers provide maximum durability
- Heat dissipating aluminum panels
- LED charge indicator light
- AA battery pack



50.000 Total

"no me gusta la mujer con pantalones"

Reportar | Editar

IOGEAR GPEN100C USB Digital Scribe - Retail



Model	
Brand	IOGEAR
Model	GPEN100C
SPEC	
Interface	USB
System Requirements	Microsoft Windows(r) 2000, XP and VISTA Minimum 64MB RAM 30MB available hard disk space Minimum 16-bit color quality Office 2000, XP, 2003 and 2007 USB Port
Features	Full editing capabilities allow easy modifications - you can highlight, annotate, add additional information, adjust ink color, ink width, and page color. Use the PEN as a Mouse, pen acts as a 2 button mouse. Create Sticky Notes on your desktop - keep reminders, to-do lists, and phone numbers close at hand. Set reminders on specific notes - with the special reminder function that pops up notes at specified dates and times. Export notes in JPEG format - share notes easily.

*es usado pero en excelente condicion, se entrega con su caja

58.000 Total

Intel Entry Storage System SS4200-E NAS Server

Que es....





Main	
Brand	Intel
Model	SS4200-E
Processor	
CPU Type	Intel Celeron Processor 420 running at 1.6 GHz
MAX Processors	1
Memory	
Installed Memory Size	512 MB
Memory Type	DDR2
Storage	
HDD Interface	SATA II
Raid Level	RAID 0 , RAID 1 , RAID 10 , RAID 5
Max HDD Capacity	4.0TB
Networking	
LAN Ports	One Intel Gigabit LAN port
Expansion	
Other ports	USB 2.0 eSATA
Power	
Power Characteristics	250W PSU
Physical Spec	
Temperature	10 - 35° C
Humidity	Up to 90% non-condensing
Features	
Features	Supports up to four 3.5" SATA (3.0 Gb/s) Hard Disks eSATA support to expand beyond four hard disk drives Disk-on-module socket

500.000 Total



LG Black GH22NP20



Model	
Brand	LG
Type	DVD Burner
Model	GH22NP20
Performance	
DVD-ROM Access Time	140ms
CD-ROM Access Time	120ms
Cache	2MB
WRITE Speed	
DVD+R	22X
DVD+RW	8X

DVD-R	22X
DVD-RW	6X
CD-R	48X
CD-RW	32X
DVD+R DL	16X
DVD-R DL	12X
DVD-RAM	12X
READ Speed	
DVD-ROM	16X
CD-ROM	48X
Physical Spec	
Form Factor	5.25"
Panel Color	Black
Configuration	
Load Type	Tray
Interface	IDE
Packaging	
Package Contents	see pictures for details

60.000 Total

AMD Phenom II X4 955 Black Edition Deneb 3.2GHz 4 x 512KB



Model	
Brand	AMD
Processors Type	Desktop
Series	Phenom II X4
Model	HDZ955FBGIBOX
CPU Socket Type	
CPU Socket Type	Socket AM3
Tech Spec	
Core	Deneb
Multi-Core	Quad-Core
Name	Phenom II X4 955 Black Edition
Operating Frequency	3.2GHz
Hyper Transports	4000MHz
L2 Cache	4 x 512KB
L3 Cache	6MB
Manufacturing Tech	45 nm
64 bit Support	Yes
Hyper-Transport Support	Yes
Virtualization Technology Support	Yes
Voltage	0.875V - 1.5V
Thermal Design Power	125W
Cooling Device	Heatsink and Fan included
Manufacturer Warranty	
Parts	3 years limited
Labor	3 years limited

430.000 Total

