

# WIRELESS USB DVR

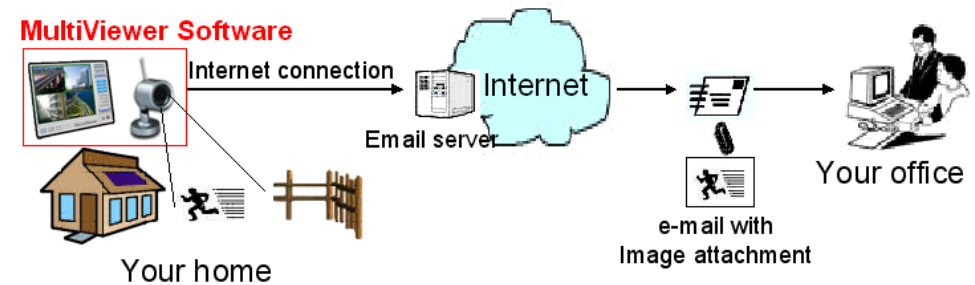
## User Manual v1.0



**ES-601WS**

## Multi Viewer

Multi Viewer is 4-channel wireless video surveillance software for Windows. It has advanced video viewer separate algorithm, various alert functions including schedule timer snap, channel control, and sound. It can handle up to 4-channels video input, captures images up to 30 frames per second from USB video capture device. It uses be installed in Windows's video encoder and audio encoder, high quality video and audio effect, record file format AVI. The files can play with Windows Media Player or Real Player etc. JPEG image snapshots can be made from video images. Other features include secure Manual Control Channel audio listening etc.



1. Send e-mails attachment with image.
2. Save image on Hard Disk.
3. Sound alarm.
4. Video signal filter, for filtrate Active and Invalid channel.
5. Signal lost alarm.
6. Motion Detection.
7. Adjustable sensitivity.
8. Automatically lock, while not any operate.
9. Schedule Monitoring sessions, for timer snap.
10. Record video/audio (with usb2.0 audio interface), snap shot.
11. Automatic Space Management. Stop recorder or capture still automatically on disk full.
12. Support 4 Channel video inputting on one computer.
13. Support on Screen Display. Display date and time, or channel

description on video.

14. Supports manual open/close Invalid channel, or add/delete channel description.

15. Supports login and logout, by User Name and Password.

16. Supports running background stealthy.

17. One video/audio input

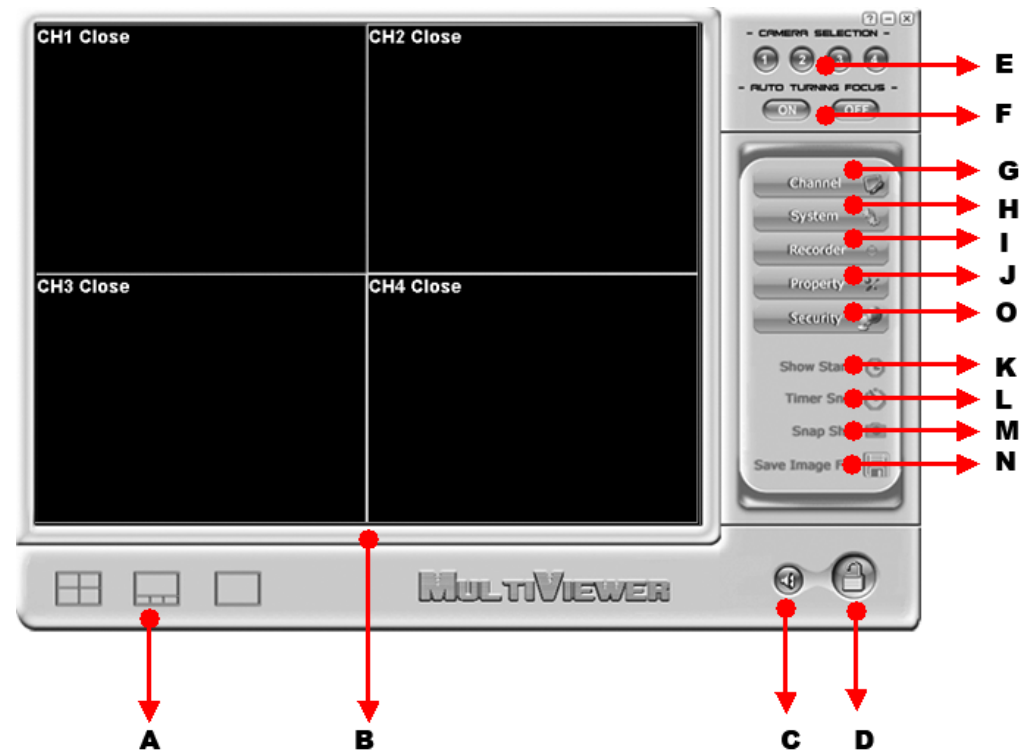
18. Receiving Frequency: channel 1: 2.414GHZ channel 2: 2.432GHZ  
channel 3: 2.450GHZ channel 4: 2.468GHZ

## System Requirement

- CPU speed: 1.8GHZ or higher
- RAM: 256 EMS memory or more
- Hard disk space 10GB
- Operating system: win2000, winXP, Vista
- USB2.0 port
- 64bit color display card

## Multi viewer application user guide

The Multi Viewer Application can be started by clicking on the Multi Viewer icon or by using the Start menu. The Following window should appear:

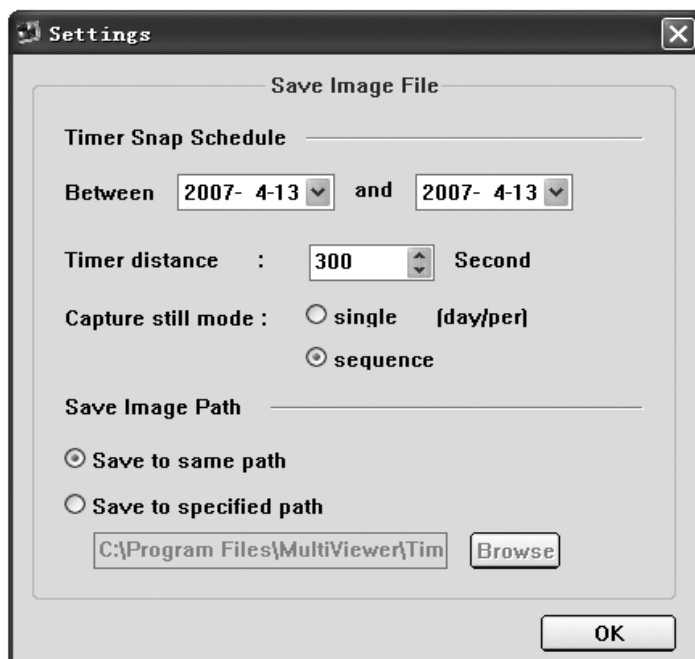


- A. Viewer Mode - Select viewer mode, such as Four Viewer, Big & Four Viewer and Single viewer.
- B. Viewer Window - Show video image.
- C. Audio Play - For audio remote listening, with USB2.0 Audio interface.
- D. Login&Logout - Login and Logout the MultiViewer, by Username and Password.
- E. Camera/Channel Selection - Click the button, select Camera/Channel.
- F. Auto turning focus - Click the "ON" button to enable, and click the "OFF" button to disable.
- G. Channel Settings -Such as channel description, channel active/inactive etc. H. System Settings - Adjust video recorder settings, such as Save AVI File Path etc.
- I. Record -Start and end video record
- J. Property - Advanced Settings video picture settings and fine tuning.

- K. Show Stamp -Show MultiViewer's system information, such as channel description, etc.
- L. Timer Snap - Captures and saves a bitmap picture after Schedule end.  
Timer adjustable by clicking on have file options button. Ref. N)
- M. Snap Shot -Capture and saves an instant bitmap picture.
- N. Save File - Settings Schedule for timer snaps displays and allows capture of destination path and filename of bitmap capture file.
- O. Security&Surveillance - Include E-Mail Sever Setup, Motion Detection Setup, Signal Lost Setup, Sensitivity Setup, and Auto Logout Setup.

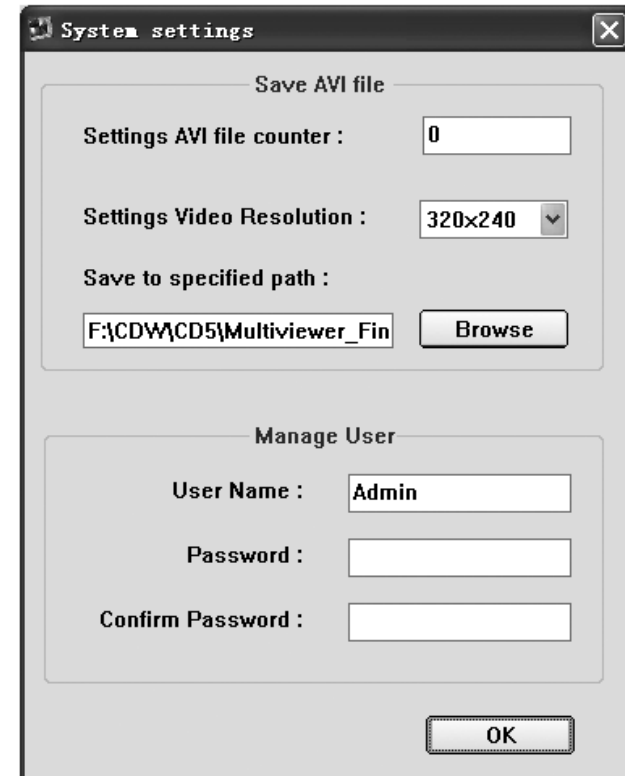
### Schedule Timer Capture Still

1. Settings Timer Snap Schedule and Save Image File Path [\*] (ref. N in Figure1)
  2. Click on Timer snap Button (ref. L in Figure1)
- (Note, Default files will be saved under MultiViewer installing folder. Such as: C:\Program Files\MultiViewer\Picture) [\*] Default Settings as follows Figure: [\*]



### Video Capturing

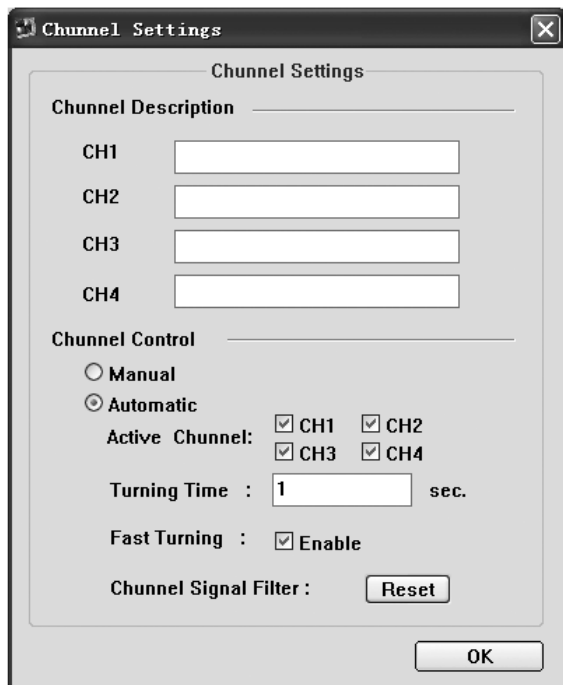
1. Click on the Recorder button to begin recording. (Ref. I in Figure1).
2. To stop recording click on the same button.
3. Output file path [\*] can be changed by clicking the System button ( Ref. H in Figure1)



[\*] Default files will be saved under MultiViewer installing folder. Such as: C:\Program Files\MultiViewer\Video [\*]

### Channel Settings

You can select the video channel active or inactive by simply selecting CH1 of the CH4 options. You can add channel description in the viewer screen. The default setting as follows Figure:



If you select the "Manual" button, MultiViewer will immediately stop control video channel, and main panel as show:



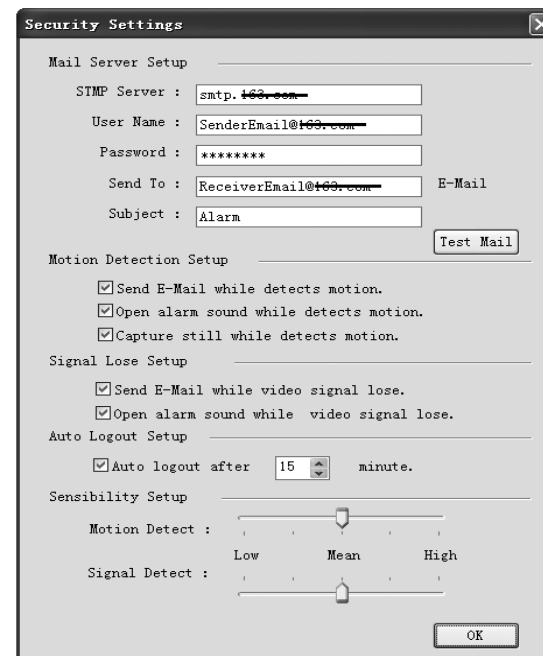
If you click the "Reset" button, MultiViewer will start signal fitter for search the video channel again, and main panel as show:



Note: You can click the "SEARCH" button, to stop search the video channel.

## Security&Surveillance Settings

You can select the motion detection, signal lost alarm, auto logout active or inactive by simply selecting the options. You can adjust the sensibility. The setting as follows Figure:



If you select the "Open alarm sound" button, MultiViewer open alarm while condition active and main panel as show:



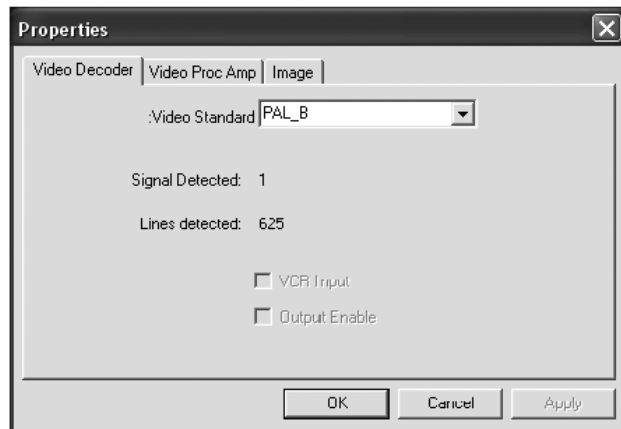
Note: [1] You can click the "ALARM" button, to stop play sound.  
[2]Default still will be saved under MultiViewer installing folder. Such as:  
C:\Program Files\MultiViewer\Picture\Motion.

## Advanced Settings

The advanced settings window allows the user to adjust image characteristics by clicking on the Camera Controls tab.

Use the picture property window shown below to adjust picture quality. By sliding the Control Adjust Bar the effect can be seen immediately on the viewer window. These setting can be saved by clicking the save button or cancelled by restoring the default settings.

Check Box control features include: - NTSC, PAL, Vertical Flip, Mirror Flip and Backlight Composition.



## Accessories:

Antenna	1 pc
DC/AV cable	1 pc
User manual CD	1 pc