



INSTALLATION AND USE

JoikuSpot allows you to share your Symbian Smartphone's 3G data connection over WLAN to any device.

This document describes how to install and use JoikuSpot Light 1.00 Beta.

As the software is in beta phase, it has not been fully tested with all possible device combinations. Joikusoft appreciates all the user feedback for identifying any arising issues with different types of device combinations and use contexts.

CONTENTS OF THIS DOCUMENT

1)JoikuSpot Light 1.00 Beta Version details.....	2
2)Installation.....	2
3)Usage with laptops (Windows XP).....	6
4)Usage with Laptops (Windows Vista).....	9
 11	
 12	
5) HTTPS configuration.....	13
Configuring HTTPS support at Internet Explorer 7.....	14
Configuring HTTPS support at Firefox.....	15
6) HTTPS settings for Apple iTouch.....	16
7)TIPS AND TRICKS.....	16



1) JoikuSpot Light 1.00 Beta Version details

1. JoikuSpot software client installs and works in Symbian S60v3 devices (e.g. Nokia N95, Nokia N95 8GB, Nokia E90, ...). Device must have WLAN and 3G support. Please view the complete supported devices list at www.joikuspot.com
2. JoikuSpot Beta supports only HTTP & HTTPS protocols at this phase. This means that you can browse normal web pages and secure web sites, but not e.g. sites requiring VPN connection.
3. Secure sites, such as web mails and banks require "Automatic detect settings" configuration in your web browser. Please see below how to setup Internet Explorer 7 or Firefox to support automatic proxy detection.
4. Instant messaging clients (Skype, Google Talk etc) may work, but with errors in communication.
5. Not supported applications at the beta phase are: Outlook, VPN or FTP programs.
6. JoikuSpot has been tested with latest Nokia phone firmware versions. If required, please update your phone's firmware easily with Nokia Software Updater (<http://europe.nokia.com/A4579163>)

2) Installation

- 1) Download JoikuSpot software for free from www.joikuspot.com.

You can download it through web or send it directly to your phone using the "Joiku 1-click" free SMS download.

- a. If you use web download, install the JoikuSpot_Light_beta.sis file into your phone with Nokia PC Suite or sending it to your phone via Bluetooth from your laptop.

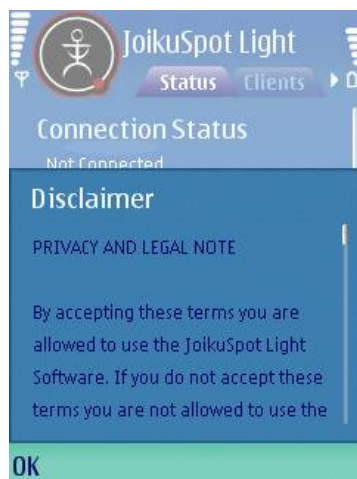


- b. If you use SMS sending, simply click the link that you receive with SMS, and download the file direct to your device. Installation happens automatically after download.

2) Install the file.

The phone asks you whether you want to install the software. Click "OK" and select whether you wish to install it to your phone memory or external memory card. As part of the installation you need to approve the terms of use in order to use the software.

Visual illustration on device screen



As part of the installation you need to approve the privacy and legal note in order to use the software

3) JoikuSpot is now installed and can be found in your phone's desktop under "Installations" or "Applications".

Visual illustration on device screen





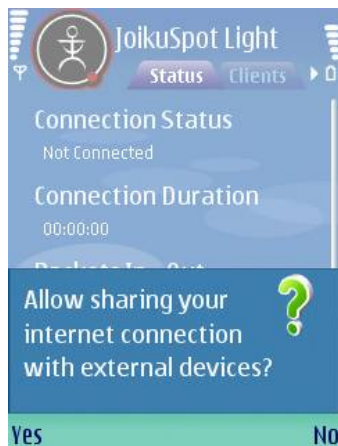
JoikuSpot is installed and can be found under Installations folder in your device

You can move the application from this folder to any folder you like such as main folder by clicking "options→move→folder name".

4) Click on the JoikuSpot icon and the application starts.

You are prompted "Allow sharing your internet connection", and by selecting "Yes" you turn your device into a WLAN HotSpot that shares your phones 3G internet connection to external devices.

Visual illustration on device screen



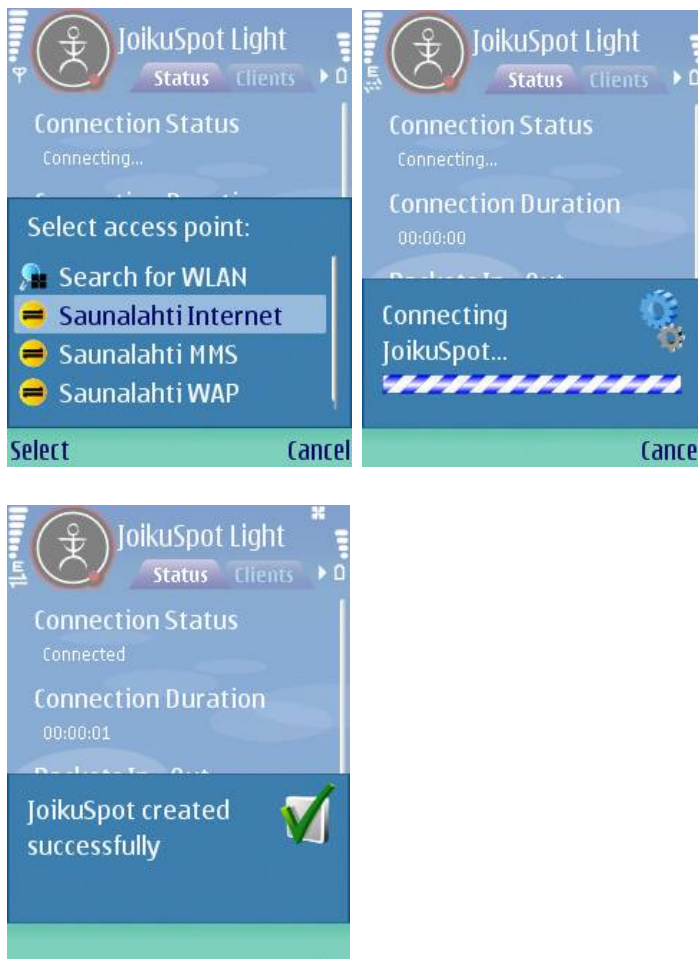
"Allow sharing your internet connection with external devices" turns your device into a WLAN HotSpot

JoikuSpot Light Technical Reference
(c) Joikusoft Oy Ltd. 2008



- 5) Choose the Internet connection that you want to share over WLAN (e.g. your operators default internet access point).

Visual illustration on device screen

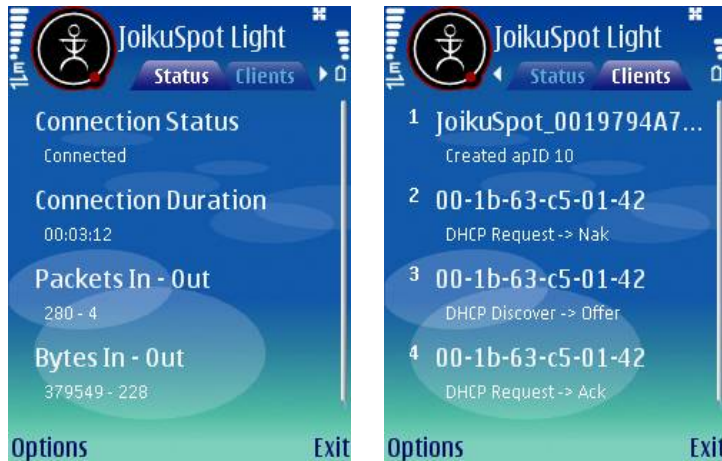


Choose your preferred internet connection from your network operator and activate the JoikuSpot. "JoikuSpot created successfully" indicates successful HotSpot creation that is visible via WLAN to external devices

6. JoikuSpot is now active and external devices can find it when scanning for open WLAN networks. External devices see your JoikuSpot as "JoikuSpot WLAN network", and they can choose to connect to internet via it.



Visual illustration on device screen



There are 2 views in the application that you can use:

Status sheet in the application indicates the connection status and amount of through-traffic via your JoikuSpot.

Clients sheet in the application indicates status of connection requests from external devices and whether the internet connection is successfully established with them.

3) Usage with laptops (Windows XP)

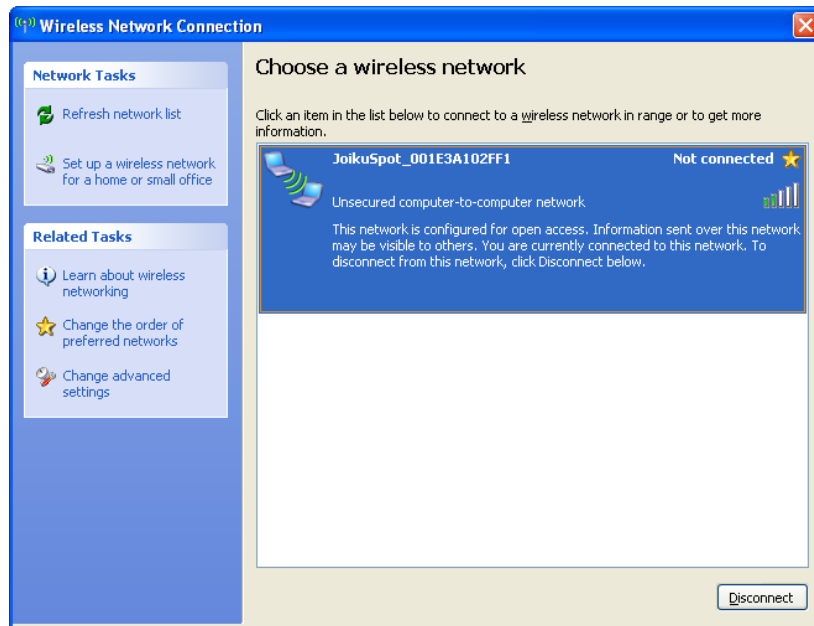
- 1) Open your laptop and make sure your WLAN is turned on. Choose WLAN networks (typically Windows WLAN icon is displayed in the lower hand right corner bar).

Click "Refresh network list". Your computer should now discover the open JoikuSpot WLAN access point, if the JoikuSpot is active. Click the JoikuSpot access point to connect to the web.

If JoikuSpot is not discovered by your computer, make sure JoikuSpot is in "connected" mode.



Visual illustration on device screen



Your computer will discover the JoikuSpot WLAN access point. Click on the JoikuSpot network to connect.

- 2) Open your web browser and start surfing. The first landing page that you will enter is always www.joikuspot.com, and when you see that you know you are successfully connected to web via JoikuSpot.

If your device has e.g. 2MBit 3G internet connection, and you are covered by 3G networks, you will enjoy a smooth and fast web browsing experience where-ever you may be.

Visual illustration on device screen

JoikuSpot Light Technical Reference
(c) Joikusoft Oy Ltd. 2008





The first landing page in your browser is always www.joikuspot.com. When you enter this page you know you are successfully connected to web via JoikuSpot.

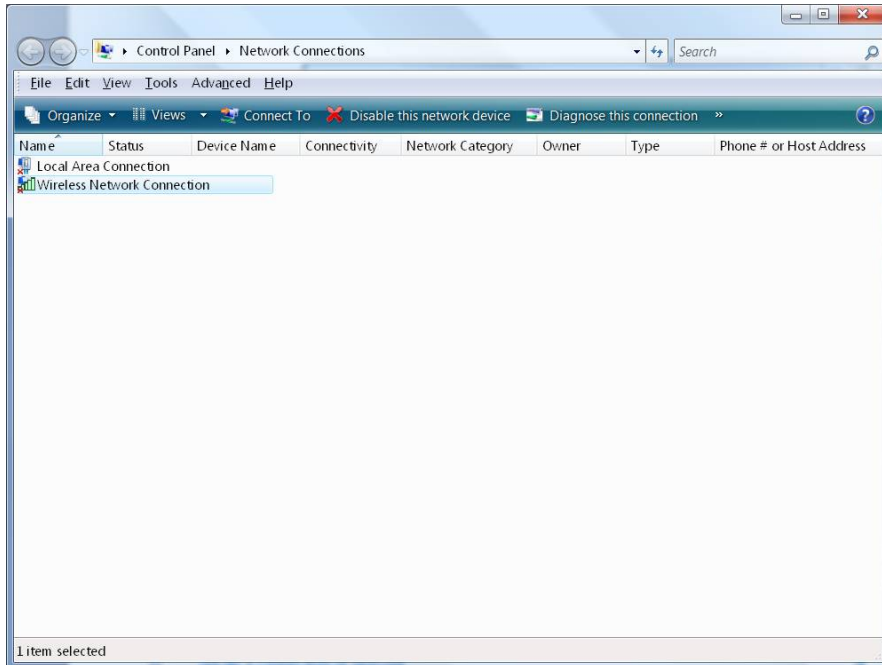
JoikuSpot Light Technical Reference
(c) Joikusoft Oy Ltd. 2008



4) Usage with Laptops (Windows Vista)

1. Select "Start → Settings → Network connections → Wireless Network Connection"

Visual illustration on device screen

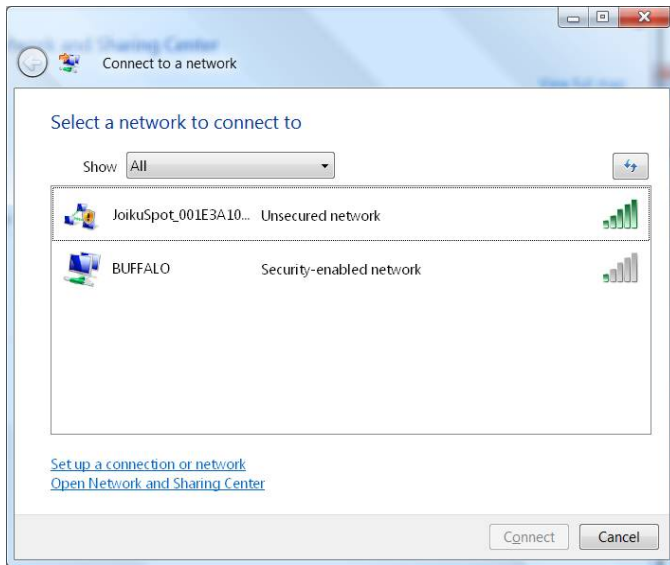


Use the "Wireless Network Connection" application to make the connection

2. Click "refresh" icon and select JoikuSpot.

Visual illustration on device screen



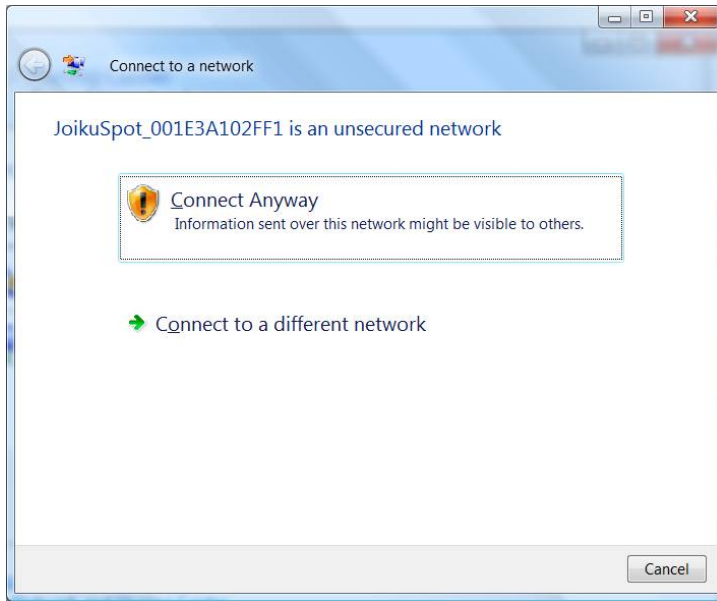


By refreshing the available wireless networks your computer will discover the JoikuSpot. Make sure the JoikuSpot is connected.

3. Select "Connect Anyway"

Visual illustration on device screen



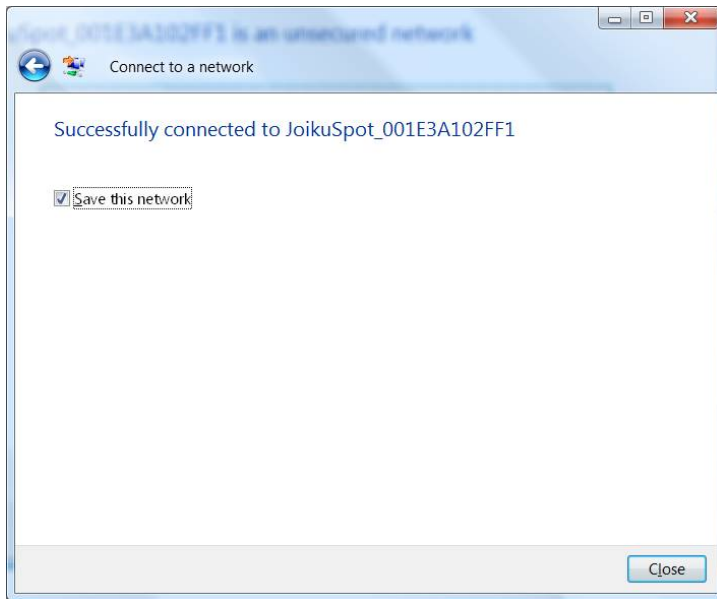


JoikuSpot is an "ad hoc" network and Windows VISTA is likely to give you this type of a "warning message". Select Connect Anyway in case you want to establish the connection via JoikuSpot.

4. Check that "**Save this network**" is selected and close. This will help you connect automatically next time.

Visual illustration on device screen

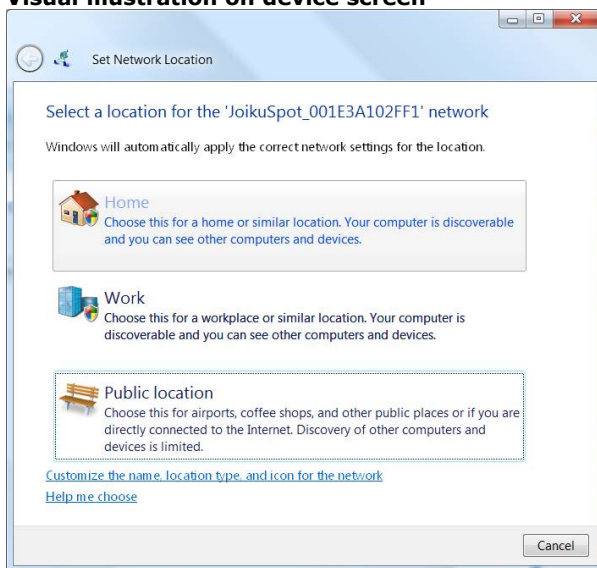




You will get this message to indicate the successful connection via JoikuSpot. Click "Save this network" in case you want to store it for future usage.

5. Next Windows Vista will ask your location. Choose "Home".

Visual illustration on device screen



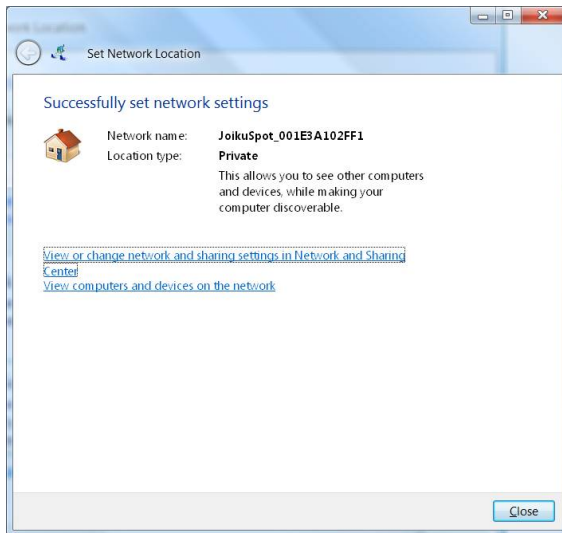
JoikuSpot Light Technical Reference
(c) Joikusoft Oy Ltd. 2008



Windows VISTA may ask for your network location. We recommend selecting "Home" option.

- 5) Further on, click close. The network is now saved. (You don't have to repeat this step after the first time if you stored the network)

Visual illustration on device screen



Your network is now saved and you can close the Wireless Network application.

- 6) Open your web browser and start surfing. (The first landing page that you will enter is always www.joikuspot.com, and when you see that you know you are successfully connected to web via JoikuSpot).

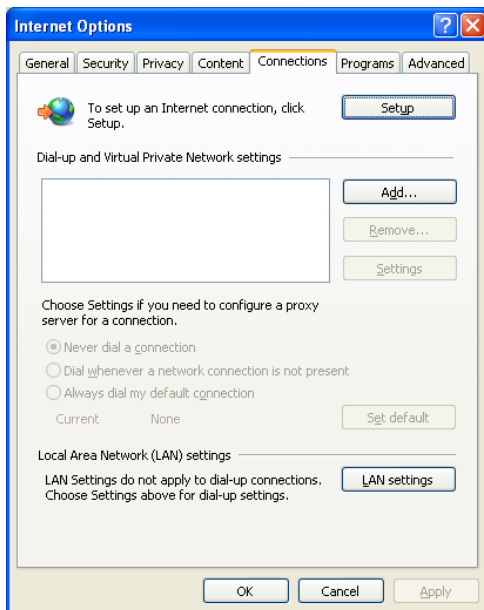
5) HTTPS configuration



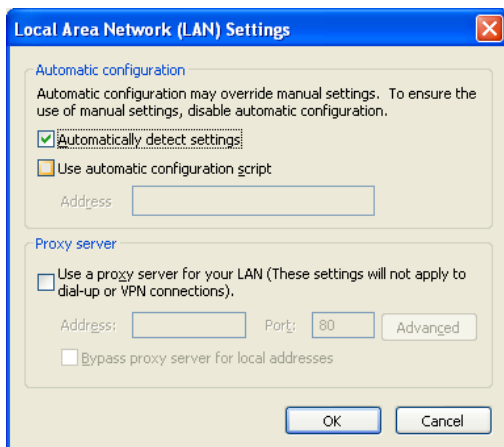
The following describes how to set support for secure web sites (Banks, web mails etc) with JoikuSpot. The settings must be done only once and will also work with other internet connections.

Configuring HTTPS support at Internet Explorer 7

1. Go to Tools → Internet Options → LAN settings



2. Check that “Automatically detect settings” is crossed. Click OK and restart your web browser.

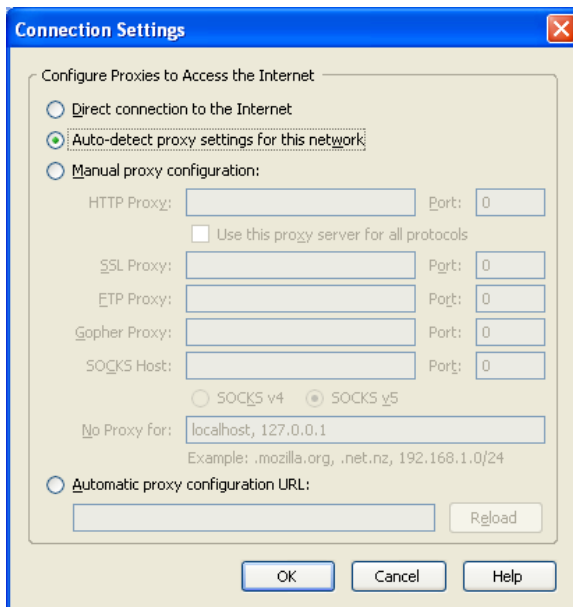


Configuring HTTPS support at Firefox

1. Go to Tools → Options → Network → Settings



2. Check that "Auto-detect proxy settings for this network" is selected. Click OK and restart your browser.



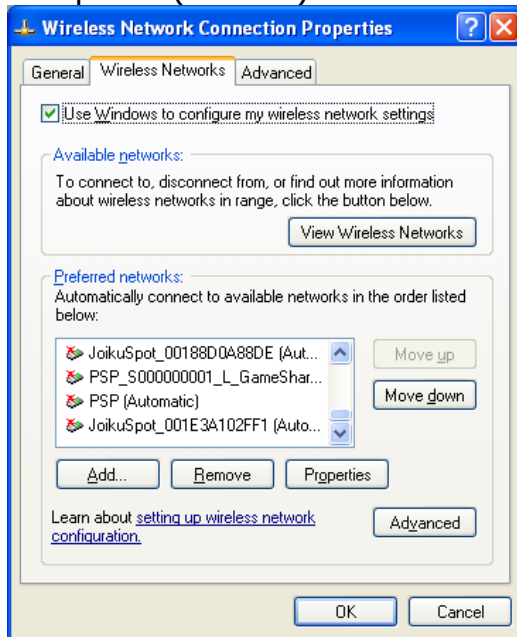
6) HTTPS settings for Apple iTouch

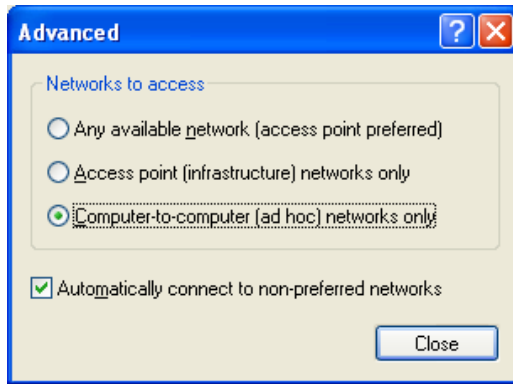
Go Settings --> Wi-fi and select JoikuSpot network. Go to bottom and set HTTP proxy to Auto.

7) TIPS AND TRICKS

Some laptops (depends of the laptop vendor) may require that you allow "Computer-to-computer (ad-hoc) networks only" for JoikuSpot. This is NOT the normal case, but you may try it if the connection does not work automatically.

Click on the Wireless network icon → View Wireless networks → Change Advanced Settings → Advanced. Choose "Computer-to-computer (ad-hoc) networks only". See pictures below.





*JoikuSpot© is a copyright of Joikusoft Oy Ltd.
JoikuSpot is a registered trademark of Joikusoft Oy Ltd.
JoikuSpot is based on Joikusoft's patent pending technology.
All rights reserved.*

*For more information contact info@joikusoft.fi or visit our web pages at
www.joikusoft.fi
www.joikuspot.com
www.joiku.com*

Let Your Joiku begin!

