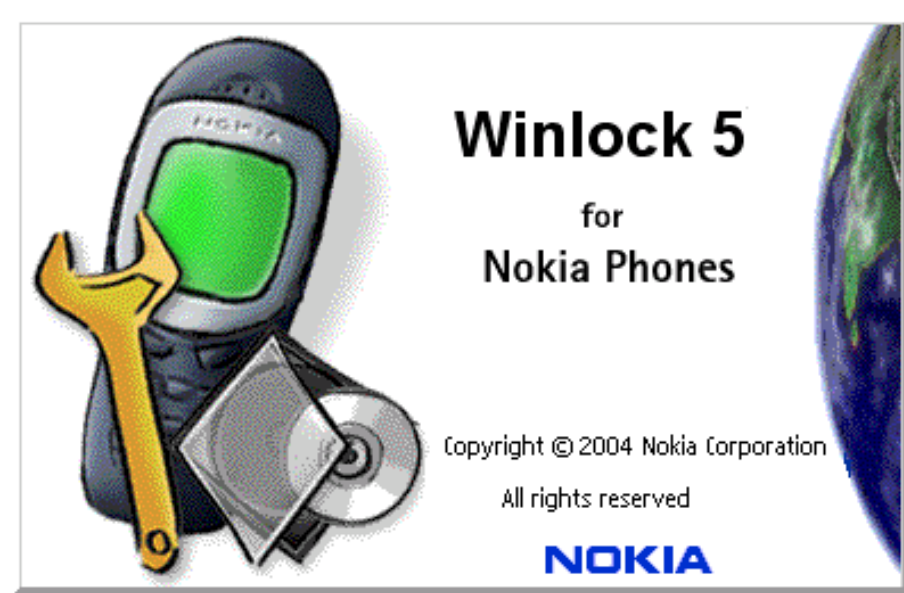


CMO SSR

SXXM13177-EN-2.0  
27.1.2005



**User Guide for BB 5.0 SIM Unlocking with Winlock 5**

CMO SSR

SXXM13177-EN-2.0  
27.1.2005

1.	List of Needed Equipment.....	3
2.	Preconditions .....	3
3.	PC Software Installation.....	3
4.	Configure Connection .....	4
5.	Unlocking When Phone is Connected to Winlock .....	7
6.	Calculating Unlock Password Without a Phone Connected to Winlock .....	11
7.	Calculating Batch of Passwords From an Input File .....	14
8.	Unlocking a Phone by Entering Password Via Keypad.....	19

CMO SSR

SXXM13177-EN-2.0  
27.1.2005**1. LIST OF NEEDED EQUIPMENT**

- Winlock 5.0 Service Software
- PKD-1 Dongle to run Winlock (any PKD-1 dongle type will do)
- SX-5 Operator Unlock Smart Card, code 0XXXXXX, specific to the operator who the phones are locked to (a smart card can only be used to unlock phones with certain operator Sim Lock configuration)
- If connection to phone is made using FPS-10 concept:
  - o FPS-10 Flash Prommer, sales pack code 0086189
  - o Phone model specific cable from FPS-10 to phone, please refer to service manuals for details
- If connection to phone is made directly from PC USB Port
  - o Any generic Smart Card reader
  - o DKU-2 USB Cable between PC USB port and phone

**2. PRECONDITIONS**

- User has general knowledge about the use of Phoenix Service Software
- SX-5 Smart card has been activated
- Configuration in SX-5 Smart Card matches with the SIM Lock configuration in the phones

**3. PC SOFTWARE INSTALLATION**

- Install Winlock 5.0. Download installation package ( e.g. **winlock5\_1\_00\_000.exe** ) to your PC. Close all other programs and run the executable file. Follow instructions on the screen. Procedure is similar to Phoenix Service SW installation.
- Install Drivers for the external Smart Card reader if you are using one

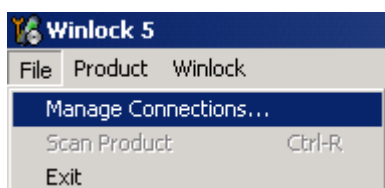
CMO SSR

SXXM13177-EN-2.0  
27.1.2005

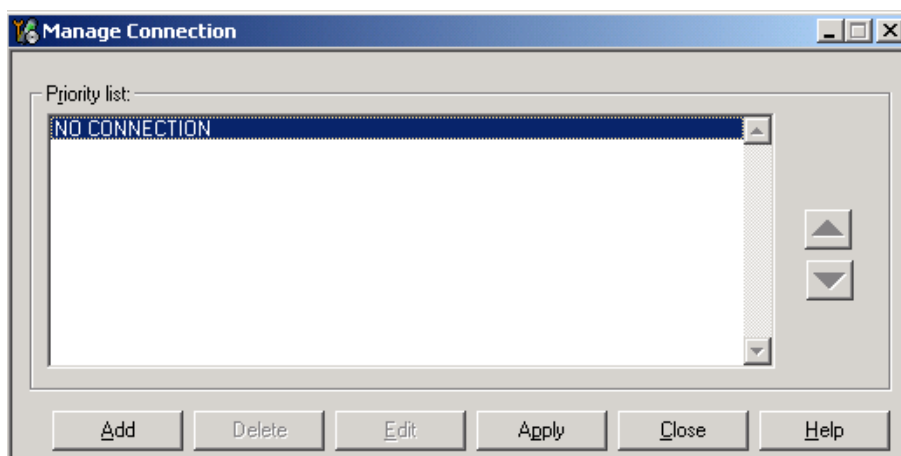
## 4. CONFIGURE CONNECTION

Connect the product before creating connection. Make sure the product is switched on.

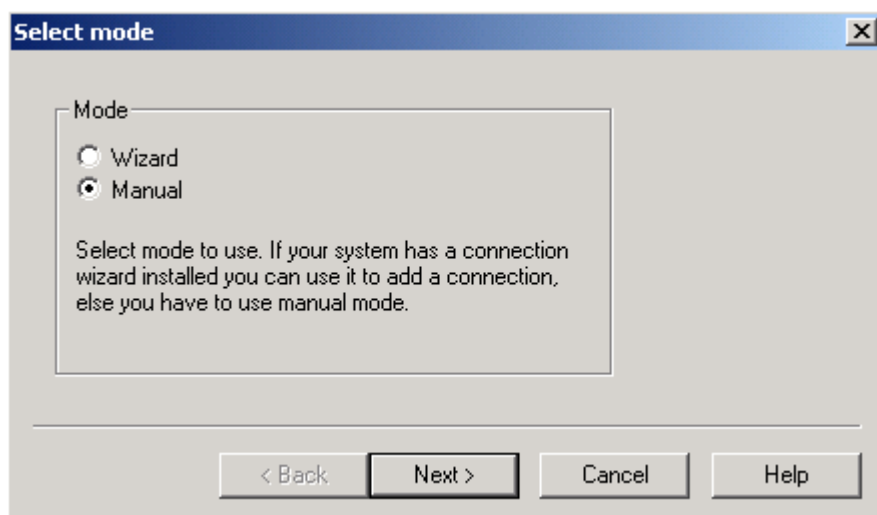
- Start Winlock 5.0 Software
- Open **"File"** - **"Manage Connections"** – menu



- Existing connections can be selected, edited, deleted and new ones created by using this dialog. To add new connection, choose **"Add"**



- Please use the **"Manual"** – option to create the connection, choose **"Next"** to continue.

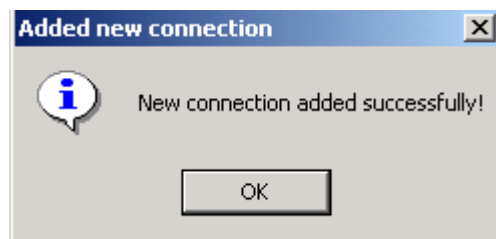


CMO SSR

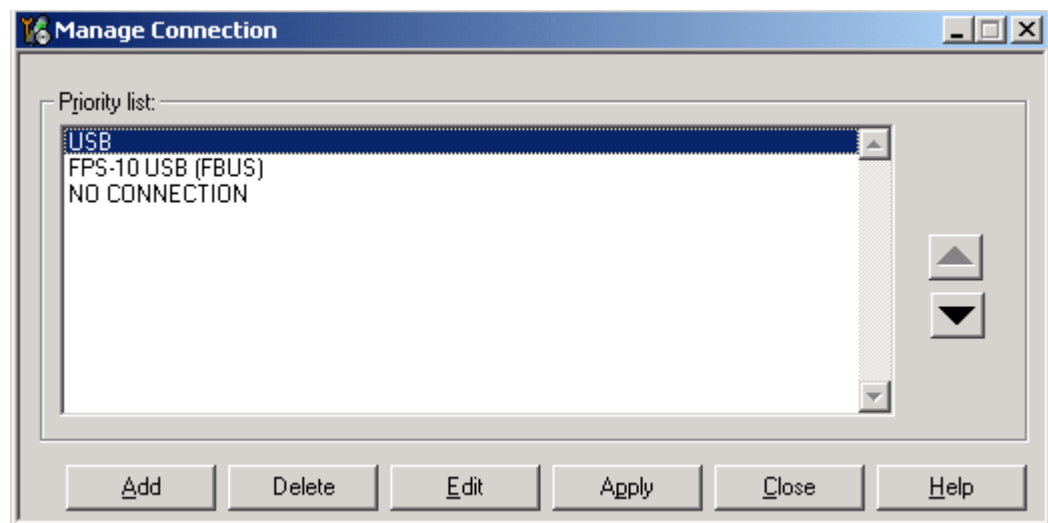
SXXM13177-EN-2.0  
27.1.2005

The connection and settings used depend on the equipment.

- If connection to phone is made using FPS-10 and USB, connection settings are following:
  - o Media: FPS-10 USB
  - o Device Index: 0
  - o Serial Num: See Serial No from the label attached to the bottom of your FPS-10
  - o Active Media: USB
- If connection to phone is made directly from PC USB Port connection settings are following:
  - o USB
- Choose **"Finish"** to complete.



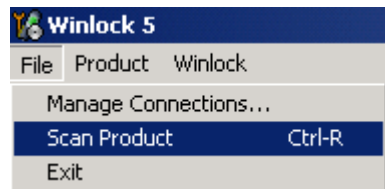
- Activate the connection you want to use by clicking it and use up/down arrows to move it on top of the list. Choose **"Apply"**. The connection is now selected and can be used after closing the "Manage Connections" window



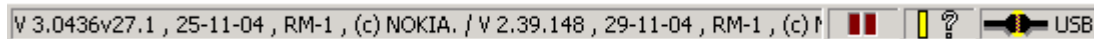
CMO SSR

SXXM13177-EN-2.0  
27.1.2005

- Select **"File"** and **"Scan Product"**



- Connection to product is ready when product type and software version can be seen on the bottom of the Winlock 5.0 screen.



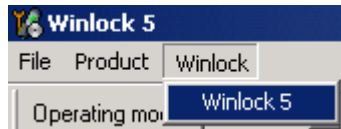
- You can read information from product when you open **"Product"** – **"Phone Information"** - Menu.
- To start Winlock 5.0, select **"Winlock"** – **"Winlock 5"**

CMO SSR

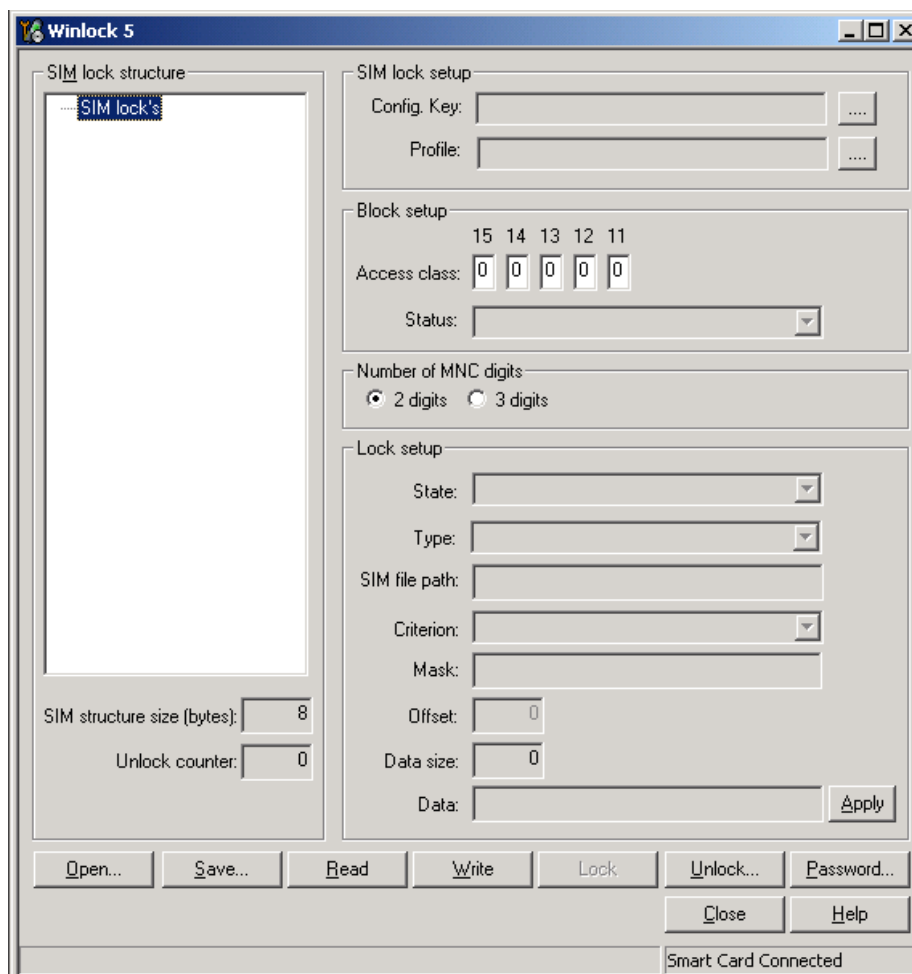
SXXM13177-EN-2.0  
27.1.2005

## 5. UNLOCKING WHEN PHONE IS CONNECTED TO WINLOCK

- To start Winlock 5.0, select **“Winlock” – “Winlock 5”**



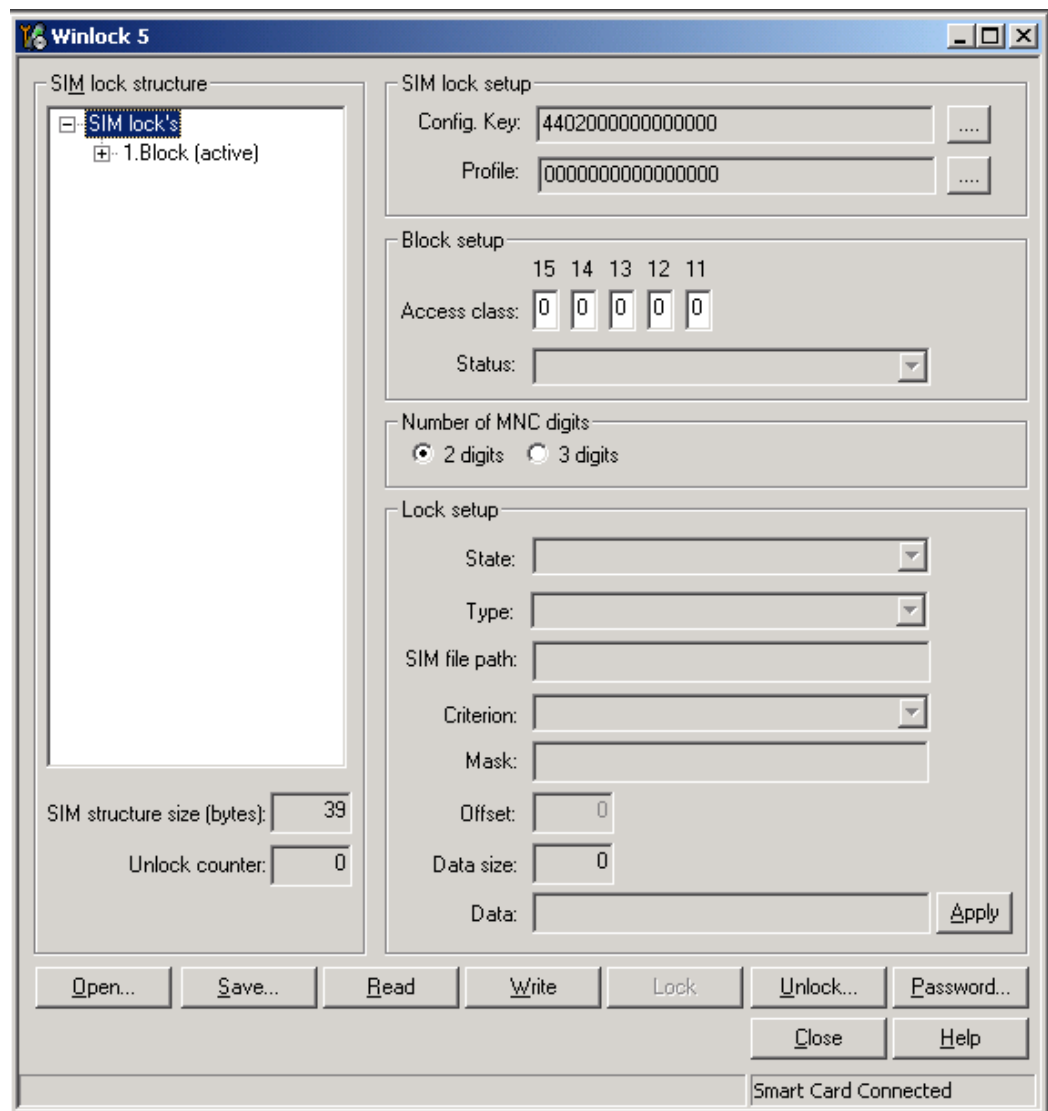
- Connect SX-5 Smart Card to external reader or FPS-10 prommer. If “Smart Card Connected” is not shown on the UI, please reactivate the connection to FPS-10 again as described in chapter 4, or reconnect Smart Card when external reader is used
- Basic Winlock UI



CMO SSR

SXXM13177-EN-2.0  
27.1.2005

- Select **“Read”** to read SIM Lock data from the connected product.
- “SIM Lock Setup” and “SIM Lock Structure” will show details of the SIM Lock in the product

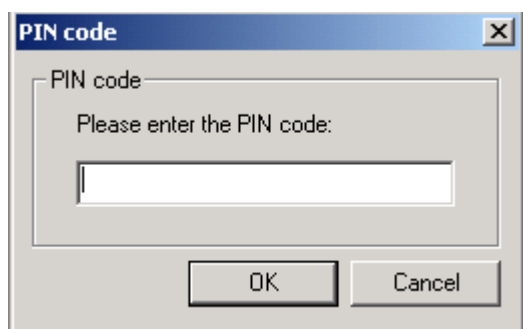




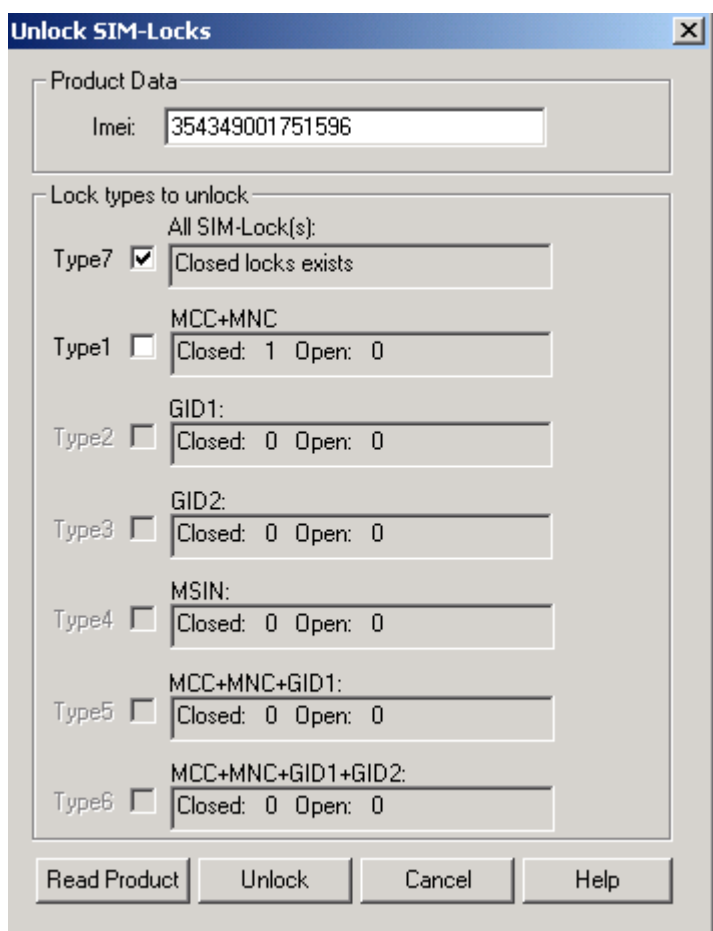
CMO SSR

SXXM13177-EN-2.0  
27.1.2005

- Select **“Unlock”**, you will be prompted the Smart Card PIN Code.
- PIN Code consists of 6 case sensitive characters.
- **Note that if you enter the wrong PIN three times. The card will be disabled. There is no way to reactivate the card.**



- After you have entered correct PIN, “Unlock SIM Locks” – UI is shown.

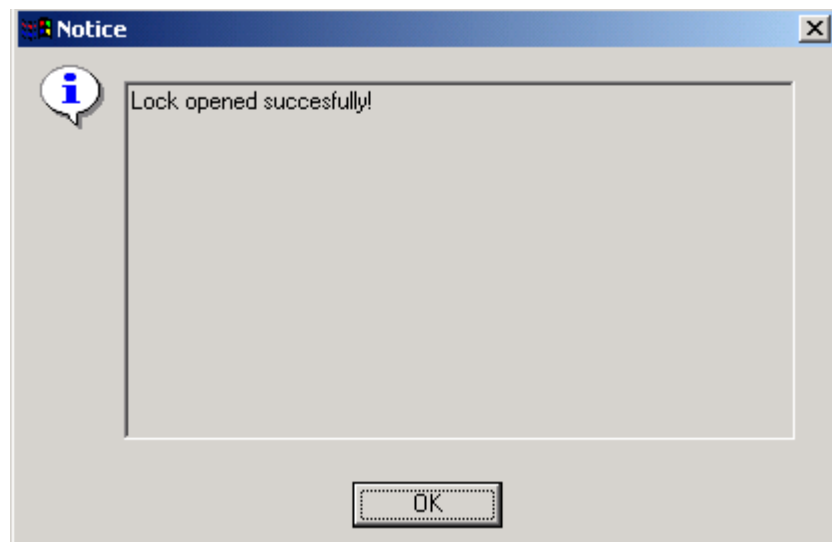


CMO SSR

SXXM13177-EN-2.0  
27.1.2005

- SIM Locks are shown on the UI.
- Sim Locks which are not in the connected product are disabled
- Select **SIM Lock level 7** to open all SIM Locks from the product. It is recommended that you use this option when unlocking phones. It is also possible to unlock different SIM Lock levels if you select them individually

Select **“Unlock”**



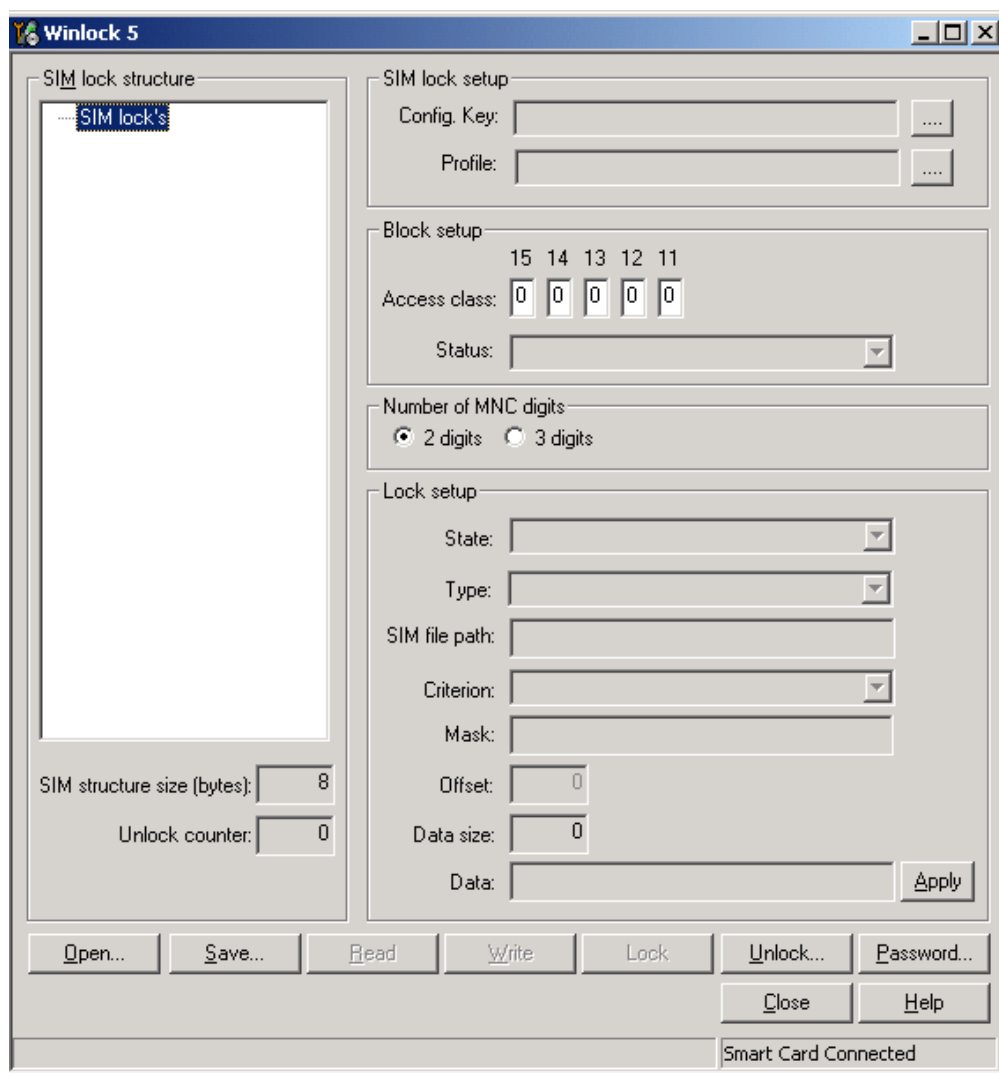
- Please note that you can only try to unlock the phone 10 times by using Winlock 5

CMO SSR

SXXM13177-EN-2.0  
27.1.2005

## 6. CALCULATING UNLOCK PASSWORD WITHOUT A PHONE CONNECTED TO WINLOCK

- Start Winlock 5.0 Software
- If you are using FPS-10 connection to Smart card, please configure connection from **“File” – “manage Connections”** – menu
- If you are using external Smart card reader, there is no need to configure connection.
- To start Winlock 5.0, select **“Winlock” – “Winlock 5”**
- Connect SX-5 Smart Card to external reader or FPS-10 prommer. If “Smart Card Connected” is not shown on the UI, please reactivate the connection again as described in chapter 4 or reconnect Smart Card when external reader is used.
- Basic Winlock UI



CMO SSR

SXXM13177-EN-2.0  
27.1.2005

- Select **"Password"** from Winlock 5 UI. You will be prompted the Smart Card PIN Code.
- PIN Code consists of 6 case sensitive characters.
- **Note that if you enter the wrong PIN three times. The card will be disabled. There is no way to reactivate the card**
- Following needs to be entered:
  - o Phone IMEI number
  - o Select **"Check All"** to calculate separate passwords for all Sim Lock levels.

**Calculate SIM-Lock Unlock Passwords**

Product Data

Imei: 354349001751596

Passwords

☒ Check all

☒ Type 1 - MCC+MNC

☒ Type 2 - GID1

☒ Type 3 - GID2

☒ Type 4 - MSIN

☒ Type 5 - MCC+MNC+GID1

☒ Type 6 - MCC+MNC+GID1+GID2

☒ Type 7 - All SIM-Lock(s)

Calculate

Read Product To Clipboard File... Cancel Help

CMO SSR

SXXM13177-EN-2.0  
27.1.2005

- Select **"Calculate"**. Passwords are calculated and they will appear on the UI

- if you select **"To Clipboard"**, calculated passwords to Clipboard. You can paste them to another document ( Word, email etc..)

IMEI number:

**354349001751554**

Passwords:

1	200823142216972
2	478377180716017
3	603809663096568
4	618132533920646
5	073237154050065
6	780271683415377
7	156803882493946

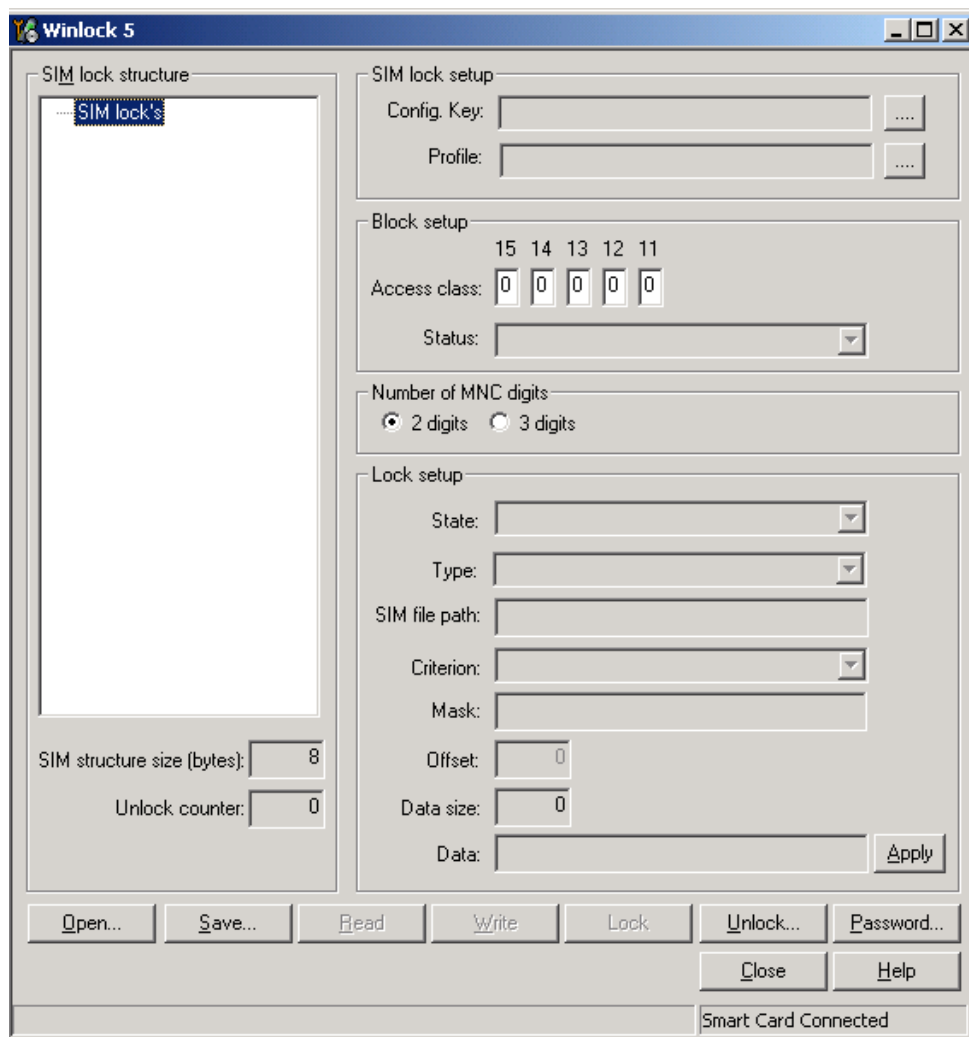
- Unlock the product by entering the calculated password via keypad, please see chapter 8 of this document for more details.
- **Note! Series 60 phones like 6630 do not accept level 7 password via keypad.**

CMO SSR

SXXM13177-EN-2.0  
27.1.2005

## 7. CALCULATING BATCH OF PASSWORDS FROM AN INPUT FILE

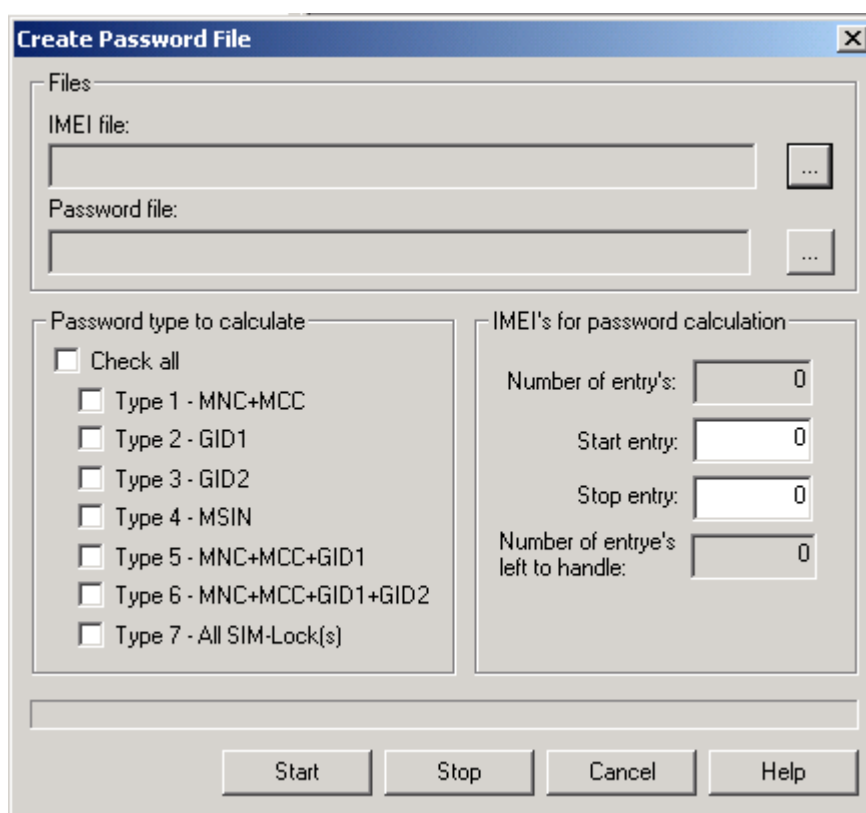
- Start Winlock 5.0 Software
- If you are using FPS-10 connection to Smart Card, please configure connection from **“File” – “manage Connections”** – menu
- If you are using external Smart card reader, there is no need to configure connection.
- To start Winlock 5.0, select **“Winlock” – “Winlock 5”**
- Connect SX-5 Smart Card to external reader or FPS-10 prommer. If “Smart Card Connected” is not shown on the UI, please reactivate the connection again as described in chapter 4 or reconnect Smart Card when external reader is used
- Basic Winlock UI



CMO SSR

SXXM13177-EN-2.0  
27.1.2005

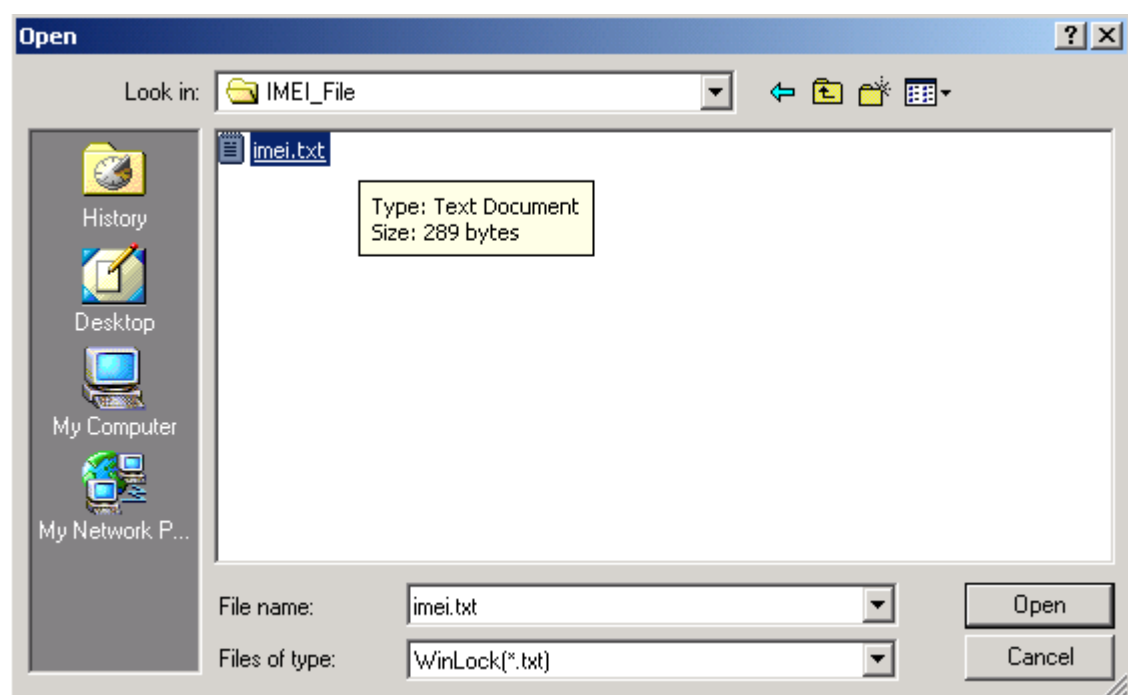
- Select "**Password**" from Winlock 5 UI. You will be prompted the Smart Card PIN Code.
- PIN Code consists of 6 case sensitive characters.
- **Note that if you enter the wrong PIN three times. The card will be disabled. There is no way to reactivate the card.**
- Select "**File**", new UI will be opened



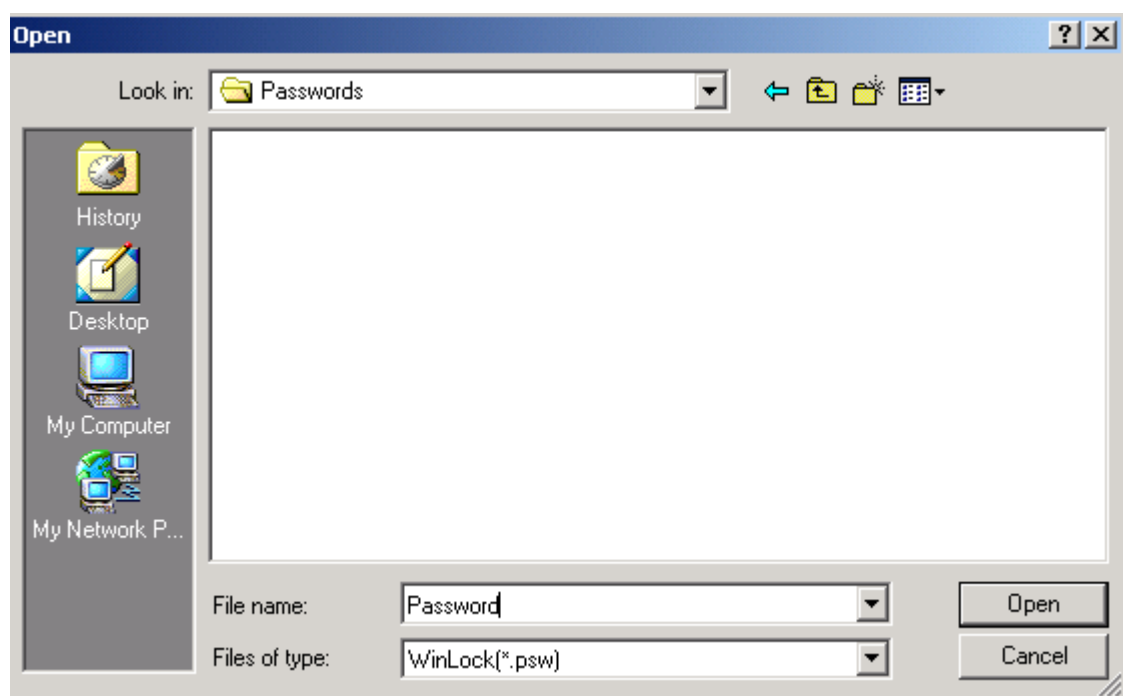
CMO SSR

SXXM13177-EN-2.0  
27.1.2005

- Select **"IMEI File:"** and browse to the location where your IMEI batch file is stored



Select **"Password File"**. Please define name and location of your password batch file which will be created after calculation.





CMO SSR

SXXM13177-EN-2.0  
27.1.2005

- Select **“Check All”** to calculate all passwords for all Sim Lock levels.
- By default Winlock will calculate passwords for all IMEI's in the IMEI batch file. It is possible to limit the amount of passwords calculated to the output password file by giving **“Start Entry”** and **“Stop Entry”**. Normally there is no need to modify this entry.

**Create Password File**

Files

IMEI file:  
C:\Temp\IMEI\_File\imei.txt

Password file:  
C:\Temp\Passwords\Password.psw

Password type to calculate

☒ Check all

☒ Type 1 - MNC+MCC

☒ Type 2 - GID1

☒ Type 3 - GID2

☒ Type 4 - MSIN

☒ Type 5 - MNC+MCC+GID1

☒ Type 6 - MNC+MCC+GID1+GID2

☒ Type 7 - All SIM-Lock(s)

IMEI's for password calculation

Number of entry's: 17

Start entry: 0

Stop entry: 16

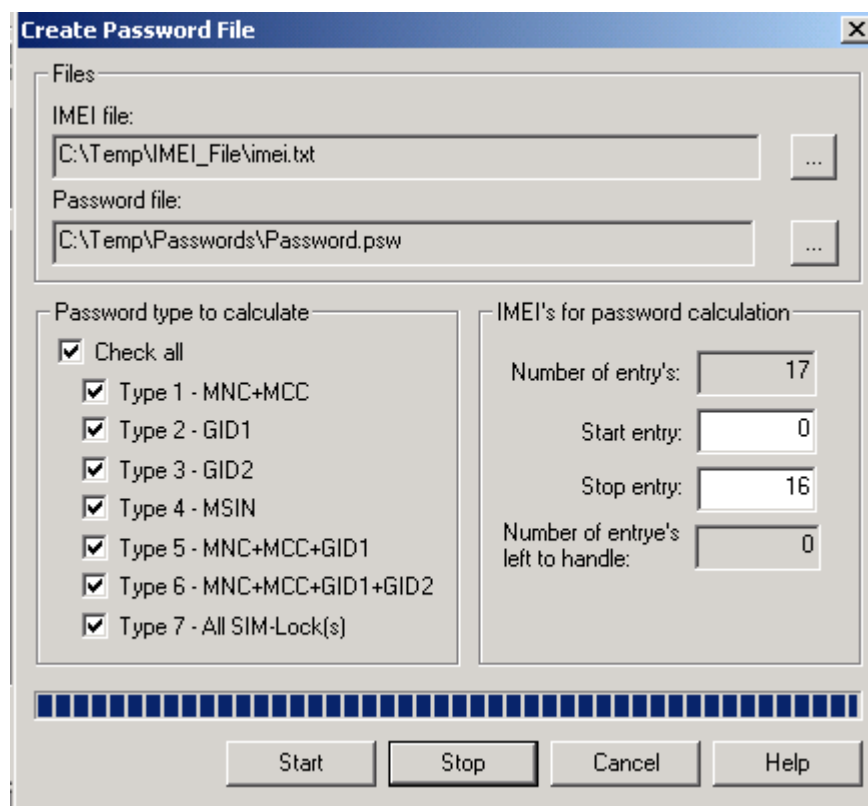
Number of entry's left to handle: 17

Start Stop Cancel Help

CMO SSR

SXXM13177-EN-2.0  
27.1.2005

- Select **"Start"**. Please be patient, password calculation may take considerable amount of time depending on the amount of IMEI's in the input file. Indicator on the bottom of the screen will show status of process.
- Please do not interrupt process before it is completed
- Close UI after process has been completed



- Output file can be opened on notepad. Each row has IMEI number followed by password. Passwords for different levels are separated by "L" and a number. If several passwords for different levels were calculated, they are also separated by tabulator.
- **Note! Series 60 phones like 6630 do not accept level 7 password via keypad.**

CMO SSR

SXXM13177-EN-2.0  
27.1.2005**8. UNLOCKING A PHONE BY ENTERING PASSWORD VIA KEYPAD**

- Insert SIM card in the phone and switch power on.
- Use the lower left key to enter “ pw+ “- characters and lower right key to enter “ # “
- Code string **#pw+012345678912345+4#** where:
  - o 012345678912345 = unlock code for the SIMLock Type
  - o 4 = SIM Lock type you selected to open
- Reset your phone, SIM Locks you selected to be unlocked are now open
- Please note that it is possible to try unlocking via phone keypad only 3 times
- After that the phone can be unlocked only by connecting it to Winlock 5 software
- **Note! Series 60 phones like 6630 do not accept level 7 password via keypad.**